



Delivering the Promise of Childhood

Early Head Start Annual Report 2021

About Our Program

Allies for Every Child's Early Head Start and EHS-Child Care Partnership programs are federally funded. In our EHS program, we serve a total of 79 children and pregnant women. A total of 60 infants and toddlers and 11 pregnant mothers are provided services through our home-based option, and 8 toddlers are served at our center-based option.

In our EHS-CCP program we are able to enhance and support learning settings to increase access to high-quality, full-day, full-year child care and provide comprehensive and continuous services for low-income families. We serve a total of 48 children - 16 toddlers in our center-based option and 32 children in the Family Child Care option.

Our Early Head Start programs offer services to families living in several zip codes. Our Early Head Start grant serves families residing in 90056, 90301, 90302, 90303, 90304, 90305 under the home-based program option, and families in 90066, 90230, and 90232 in our center-based option. Our Early Head Start Child Care Partnership grant serves families in 90003, 90008, 90011, 90016, 90034, 90036, 90043, 90064, 90066, 90230, 90250 90301, 90302, 90303, and 90304 under Family Child Care and center-based options.

Our center-based option offered services for nine hours each day, from 7:30am to 4:30pm, five (5) days a week. Our home-based program provided weekly 90 minute home visits and bimonthly socializations, resulting in 45 home visits and 23 socializations per year. Our Family Child Care provider options provided full-day, full-year services, offering flexible schedules between 6:00am and 6:00pm to support children and families. These service options were impacted by the COVID-19 pandemic, with center-hours shifting to 7:30am to 4:00pm to accommodate additional sanitation measures throughout the program year, and home-based delivery shifting to a virtual method of delivery.

Early Head Start is a comprehensive program. Our staff worked with families to identify and enhance their strengths and provided guidance and support to meet their goals while preparing children to be kindergarten ready. This was achieved through a full array of services including: education, health, nutrition, mental health, disability services, transportation, family partnership, community partnerships, and other entities.

2020-2021 Program Year Enrollment

During the 2020-2021 program year, our EHS program served a total of 7 pregnant women and 72 children. In our EHS-CCP program, we served a total of 71 children. Our average monthly EHS enrollment was 72% of our funded child capacity (due to impact of pandemic on home-based services); our EHS-CCP average monthly enrollment was 98%. While EHS programs are allowed to have 10% of the families served be over-income status, only 7% of families served through Allies earned over the federal poverty threshold. The families served included children in foster care (6%), families and children experiencing homelessness (15%), pregnant women that needed mental health support and children with special needs.



Health

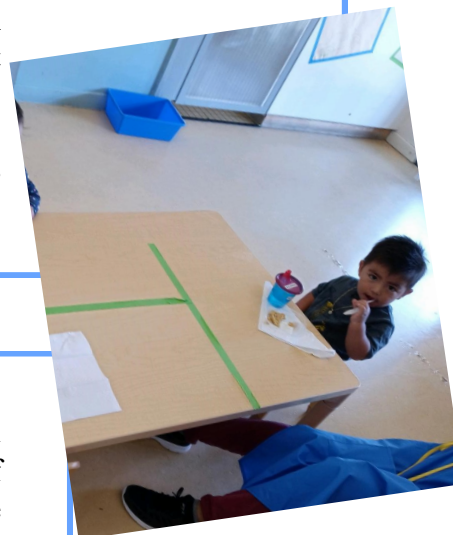
Allies for Every Child's Early Head Start program places great emphasis on the health and well-being of children and families. Every child enrolled receives a broad array of health services, including screenings and referrals, immunizations up-keep, nutrition assessments and follow-ups. Our staff ensures all children enrolled in our program have access to ongoing acute and routine medical and dental care.

Allies' various health services shifted to a telehealth method of delivery in 2020 and continued operating under these methods during PY 2020-21 in order to provide quality, comprehensive services to children and families during the COVID-19 pandemic. Graduate-level Early Childhood Mental Health interns supported clients by creating individual therapy bags so each client could be prepared for their telehealth sessions.

Nutrition services were adapted at the center, providing individually packaged nutritious meals for children. In order to meet needs of families experiencing food or other financial insecurities, weekly produce deliveries were provided to families, including home-based, center-based, and family child care based families.

During PY 2020-2021, 31% of all cumulatively enrolled children (up from 19% at the beginning of enrollment and up from 21% at the end of the 2020 program year) were up to date on scheduled, primary healthcare and 41% (up from 26% at the end of the 2020 program year) were up-to-date on all dental screenings and exams based on EPSDT suggested schedules.

SOURCE: 2020-2021 EHS PIR



Disabilities

Early Head Start programs provide general development and social-emotional screenings for children within the first 45 days of enrollment. During 2020-2021 program year, screenings were conducted virtually, allowing Allies staff to continue supporting caregivers with goal setting and early identification while being mindful of health and safety guidance due to the pandemic. 18% of children in EHS and 11% of children served in the EHS-CCP programs had a developmental delay, all of whom received services under an Individualized Family Service Plan (IFSP) or Individualized Education Program (IEP). Screening requirements were met for 95% of newly enrolled children (up from 39% in 2019-2020 program year). Completed screenings allow Allies to identify behavioral and developmental concerns. Of those with an IFSP, 57% in EHS and 13% in EHS-CCP were identified while enrolled during PY 2020-21 as needing further follow-up assessments and were found eligible for developmental services through Part C - Regional Center. This data reflects the importance of early identification of special needs and ensuring children receive appropriate services as soon as possible to support their continued development.

SOURCE: 2020-2021 EHS PIR



**“TO BE PREGNANT IS TO BE VITALLY
ALIVE, THOROUGHLY WOMAN, AND
DISTRESSINGLY INHABITED. SOUL AND
SPIRIT ARE STRETCHED—ALONG WITH
BODY—MAKING PREGNANCY A TIME
OF TRANSITION, GROWTH, AND
PROFOUND BEGINNINGS.”
- ANNE CHRISTIAN BUCHANAN**

Prenatal Services

Pregnancy is a time of anticipation and preparation, and for first-time mothers, may bring anxiety that makes them especially eager for information and reassurance that Allies' Early Head Start (EHS) staff can provide.

The literature tells us that early initiation of EHS Expectant Family Services provides the opportunity to influence the quality of the early childhood environment with a positive impact on infant brain development.

Our expectant mothers received a prenatal approach that included high-quality individualized services that were comprehensive and intensive when needed or desired to benefit expectant families and their newborns. If expectant mothers were not being seen by our public health nurse, EHS staff providing services to pregnant women were supported by our nurse.

There are a variety of reasons that the team at Allies continue to be excited and passionate about serving our expectant families. These reasons include:

- EHS prenatal visits allow an opportunity to link parents and infants to early preventive medical care and other social supports.
- Parents learn how to care for their newborn, even if they have been pregnant before.
- Services help promote parent-child bonding and attachment.
- Services facilitate the formation of a long-term, trusting relationship between home educators and families.

In 2020, services abruptly shifted to a virtual telehealth model due to the COVID-19 pandemic, and services continued with this model through the 20-21 Program Year. Our team at Allies continued to provide comprehensive supports through adapted services, allowing pregnant mothers to maintain their health and well-being.

Pregnant Mothers Received:

Prenatal health care	100%
Mental health interventions and follow up	100%
Information on risks of substance use	100%
Information on the benefits of breastfeeding	100%
Prenatal education on fetal development	100%

SOURCE: 2020-2021 EHS PIR

Preparing Children for Kindergarten

Allies for Every Child Early Head Start program builds a foundation for kindergarten readiness. The Creative Curriculum was used in the center-based classrooms and home-based option to prepare children for kindergarten. Child Development Specialists used the Creative Curriculum for Family Child Care to build bilingual lesson plans for use in provider homes. Our staff observed children in their natural environment and implemented activities that helped children meet their milestones. Our goal was for children to learn through play, be creative, and think critically.

School readiness goals were concentrated in the following domains: Approaches to Learning; Social and Emotional Development; Language and Literacy; Cognition; and Perceptual, Motor and Physical Development. Our School Readiness goals supported our overall programmatic goals that aim to incorporate Family Engagement opportunities related to language and literacy and cognition, specifically focused on support of critical thinking skills through exposure to Science, Technology, Engineering, and Math (STEM).

Our programmatic goals included measurable outcomes that allowed us to review trends and determine program strengths and areas for improvement. Through these outcomes, a professional development plan was created to support our staff by providing training, resources, and developmentally appropriate strategies.

Adapting to New Guidelines

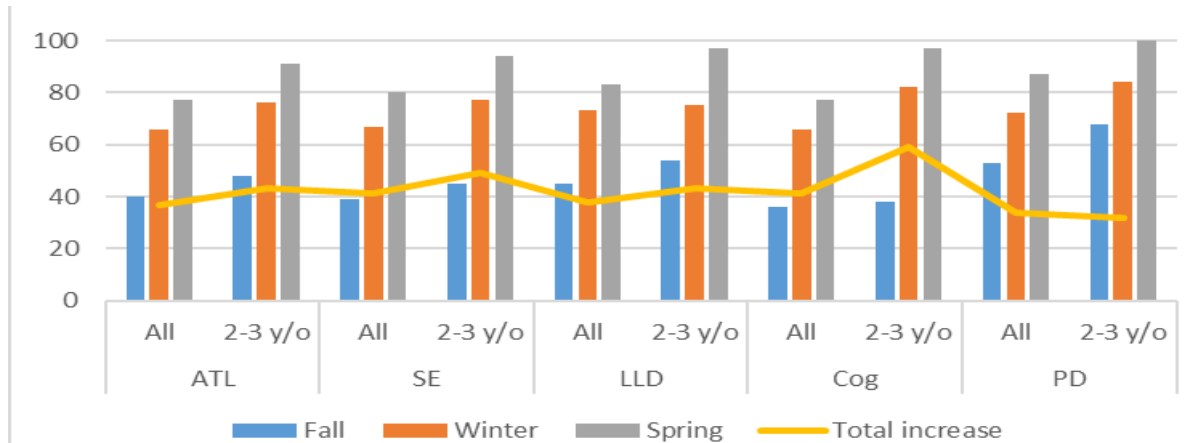
As a result of the COVID-19 pandemic, Allies' programs adapted service delivery in 2020 and continued modified approaches during Program Year 2020-21. Home based services continued virtually with weekly produce deliveries. Family Child Care providers and families continued receiving virtual support from Child Development Specialists, with a shift to in-person support visits during the second half of the program year under strict health and safety guidance. The center-based program returned to in-person operations

under strict guidelines, including personal protective equipment, physical distancing practices, increased sanitation practices, adapted drop-off and pick-up procedures, and daily COVID-19 screeners for staff, children, and families. Center classrooms and Family Child Care homes adapted routines and schedules to incorporate more outdoor learning opportunities.

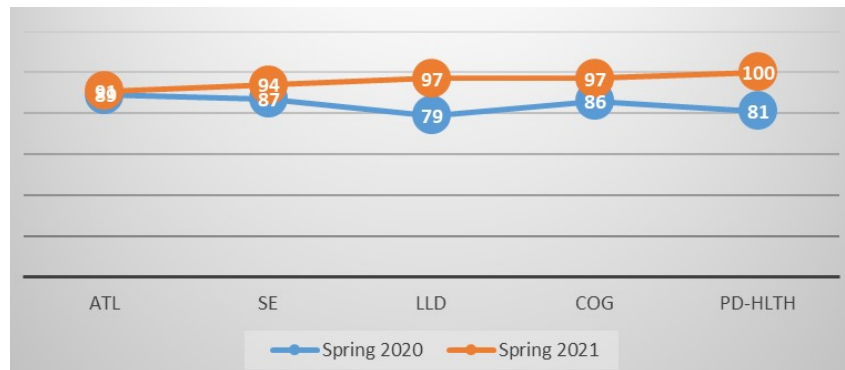
Allies educators maintained close connections with families by conducting weekly Brief Wellness Assessments for those participating in virtual learning. This assisted with identifying how children and families were doing, and being able to provide supports that may have been needed. Family engagement continued through lesson plans that included Learning Games, which families could do at home to support their child's continued learning.



2020-2021 Child Outcomes
EHS & EHS-CCP
Agency Wide Infant/Toddler Analysis



Data reflects percentage of children reaching age level expectations in Fall, Winter, and Spring rating periods in each of the 5 domains of the DRDP (2015) as well as comparison between Spring 2020 and Spring 2021.



Progress Report on School Readiness and Data Analysis:

In all of our program options, we utilized the Desired Results Developmental Profile (DRDP) (2015) assessment tool. The data from the DRDP (2015) assessment was aggregated three times per program year. The overall analyses of the 2020-2021 program year indicated that children showed growth in every developmental domain agency wide. This confirms that, in addition to the natural attainments of typical developmental milestones, the extensive exposure to academic interventions significantly contributed to the overall development of our children.

The most measurable growth agency wide occurred in the developmental domain of Cognition (COG). Allies met agency goals of meeting age level expectations in all domains overall, however recognize the tremendous impact of the pandemic on children, and the need for Allies to continued to focus on development in Approaches-to-Learning/Self-Regulation (ATL-REG), especially as efforts to move beyond the screen and back to in-person services become a strong focus for the upcoming program year.

Our plans to continue promoting growth in the Approaches to Learning/Self-Regulation domain include ongoing trainings, practice-based coaching, and providing educator support in practices that promote self-regulation and social emotional responsiveness. We encourage parent engagement in activities by focusing on all of these domains when building child goals during Home Visits and Parent Conferences, as well as through other Allies sponsored parent engagement events.

Parent Involvement

Allies for Every Child's Early Head Start program supports parents as children's primary teachers. Allies emphasizes parent involvement to assist Early Head Start parents in taking an active approach in their child's education and development. Allies relies on both families and communities to help strengthen its program, thus parents are encouraged to contribute to the program in various ways.

Because Allies understands the importance of addressing all of the concerns that threaten at-risk children, Early Head Start connected children and their families to our full range of vital, integrated support services. We used a parent interest survey completed by parents and guardians across Allies to guide meeting topics, workshops, events, and activities offered throughout the year.

In addition, the Policy Council served as a decision and policy-making body in conjunction with Allies' Board of Directors using a shared governance model. It was made up of elected parents and community representatives. Policy Council meetings were held virtually during the program year.

In the 2020-2021 Program Year, Allies offered services and many parent activities virtually and provided other opportunities for parents to engage within the Allies community, such as drive-thru events where community health and safety guidance was heavily considered. These events included:

- Connecting Parent Meetings
- Caring Conversations Café Model (Parent Cafés)
- Produce Drive-Thrus
- Back-to-School Bash
- Week-long virtual events:
 - Arts Festival
 - Fall Celebration
 - Winter Celebration
 - February Family Fun
 - May Flowers
 - June, June, June!

Promoting Family Outcomes: Number of families receiving services throughout 20-21 Program Year

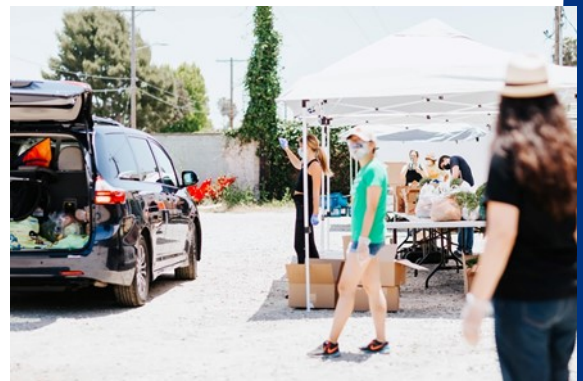
EHS

Total families served	68
Emergency/crisis intervention	48
Involvement in discussing child screening and assessment results	56
Family that received at least one service	61

EHS-CCP

Total families served	64
Emergency/crisis intervention	32
Involvement in discussing child screening and assessment results	59
Family that received at least one service	61

SOURCE: 2020-2021 EHS PIR



2020 Early Head Start Expenditures and Revenues

Expenditures for January 1, 2020 through December 31, 2020 were \$1,195,201. Federal Share (EHS) was \$1,041,549 and Non-Federal share was \$147,703. The Non-Federal share was comprised of donated goods and services as well as private funding, including proceeds from Allies' Annual Arts Festival fundraising event.

2020 Early Head Start Revenue

Revenue	Actual
Federal Funds	\$1,041,549
Non-Federal Share (includes private fundraising)	\$147,703
Total	\$1,189,252

2020 Early Head Start Expenditures

Expenditures	Actual
Personnel	\$460,495
Benefits & Payroll Taxes	\$106,266
Supplies	\$39,065
Other Direct Costs	\$297,708
In-Kind Services	\$147,703
Administration	\$143,964
Total	\$1,189,252

Early Head Start FY2021 Approved Budget

Revenue	
Federal Share (EHS)	\$1,197,459
Non-Federal Share	\$299,365
<i>Total</i>	\$1,496,824
Expenditures	
Personnel Salaries	\$648,266
Benefits & Payroll Taxes	\$157,273
Supplies	\$35,728
Other Direct Costs	\$180,773
In-kind services	\$299,365
Administration	\$175,419
<i>Total</i>	\$1,496,824

Financial Audit

During our Fiscal Year 2019/2020 audit, independent auditor The Harrington Group audited the financial statement and position of Allies for Every Child as of June 30, 2020, including its statement of activities, functional expenses and cash flows. The audit showed no deficiencies or material weaknesses. A full copy of that audit report is available to the public on request.

FY 2020-2021 Early Head Start Partnership Expenditures and Revenues

Expenditures for July 1, 2020 through June 30, 2021 were \$829,953. Federal Share (EHS-Partnership) was \$652,000 and Non-Federal share was \$177,953. The Non-Federal share is made up of donated goods and services, matching California Department of Education CCTR state funding, and proceeds from Allies' annual Arts Festival fundraising event.

**Early Head Start Partnership
July 2020-June 2021 Revenue**

Revenue	Actual
Federal Funds	\$652,000
Non-Federal Share	\$177,953
Total	\$829,953

**Early Head Start Partnership
July 2020-June 2021 Expenditures**

Expenditures	Actual
Personnel	\$312,868
Benefits & Payroll Taxes	\$59,857
Contractual	\$105,292
Supplies	\$21,315
Other Direct Cost	\$62,532
In-Kind	\$177,953
Administration	\$90,136
Total	\$829,953

**Early Head Start Partnership
July 2021-June 2022
FY2022 Approved Budget**

Revenue	
Federal Share (EHS)	\$769,808
Non-Federal Share	\$192,251
Total	\$962,059
Expenditures	
Personnel Salaries	\$408,978
Benefits & Payroll Taxes	\$92,962
Contractual	\$100,000
Supplies	\$24,406
Other Direct Costs	\$81,808
In-Kind	\$192,251
Administration	\$78,210
Total	\$962,059

Financial Audit

Our most recent audit, by independent auditor The Harrington Group for Fiscal Year 2019/2020, audited the financial statement and position of Allies for Every Child as of June 30, 2020, including its statement of activities, functional expenses and cash flows. The audit showed no deficiencies or material weaknesses. A full copy of that audit report is available to the public on request.

Contact Us:
(310) 846-4100 phone
(310) 846-4112 fax
www.alliesforeverychild.org